



GUIDE TO THE SECOND EULIST STUDENT CONFERENCE



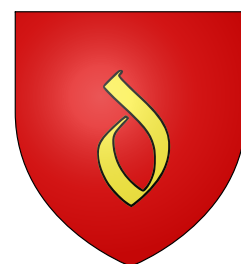
IMT Nord Europe
École Mines-Télécom
IMT-Université de Lille



I'M TOMORROW



WELCOME TO DOUAI!



Location

Douai is a small town in northern France, near Lille.



History

Douai, in northern France, was a medieval trade center before coming under Spanish rule. Louis XIV captured it in 1667, making it French. The city thrived with coal mining in the 19th century but suffered in both World Wars. Rebuilt after the conflicts, it remains an important cultural and educational hub. Today, it is known for its university, UNESCO-listed belfry, and the Fêtes de Gayant.

MUST SEE!

TOURISTS INFORMATION CENTER

📍 Place d'armes

The Hôtel du Dauphin mansion was built in the 18th century and was originally used for legal, then military, purposes. Today, it is the Tourist Office.



HÔTEL D'Aoust

📍 50 Rue de la comédie

The Hôtel d'Aoust mansion is the site of the Administrative Court of Appeal. It was built at the start of the 18th century in a Louis XV style.



PORTE DE VALENCIENNES

📍 Place Haubersart

The gate was constructed in 1453. It represents one of the main entrances, through which a triumphant Louis XIV arrived in the town.



COURTHOUSE

📍 Place Pollinchove

In 1714, the Flemish Parliament set up in Douai in a former monastery. You can still see the oculi that led to the grain stores. Today, it is the Criminal Court of the Nord Department.



BELFRY AND TOWN HALL

📍 83 Rue de la Mairie

This immense building is sandstone dates from the Middle Ages and stands 61 meters high. Its carillon continues to ring out every quarter hour.



NOTRE DAME CHURCH

📍 Rue de Valenciennes

One of the oldest churches in Douai! The chapel that was built in the 12th century is still standing, and you can admire its superb stained-glass panels.



MUST SEE!

HÔTEL DE LA TRAMERIE

📍 132 Rue des Foulons

The Hôtel de la Tramerie mansion was built in 1649 and displays all the traditions of local architecture, such as brick walls and stone details.



CHARTEUSE MUSEUM

📍 130 Rue des Chartreux

Classed as a historical monument, the part of Carthusian monastery that houses the museum is alone worth a visit.



SAINT PETER'S COLLEGIATE CHURCH

📍 64 rue Saint Cristophe

The largest church in the Department is well worth a visit. It combines the Flemish gothic and classical styles with an impressive collection of paintings.



Distance: 16km

 : 4h  : 1h

Starting point:

A Gayant expo parking lot

Must see:

Nature:

1 Terrils of Escarpelle and Paturelles

4 Germignies North and South earthworks

Patrimony:

2 Roost-Warendin headframe

3 Anhiers headframe

5 Cité de la Clochettes



THE SCARPE RIVER



THE IMTNE SCHOOL

History

The story of IMT Nord Europe is one of strategic transformation and adaptation to the changing landscape of higher education, research, and industry. It emerged from the merger of two prestigious French engineering schools, Mines Douai and Télécom Lille, to create a leading institution within the Institut Mines-Télécom (IMT)



IMT Nord Europe

Impact and future

IMT Nord Europe plays a pivotal role in driving innovation in France and Europe. Its alumni are active in sectors ranging from heavy industry to cutting-edge technologies. The school's focus on interdisciplinarity, global collaboration, and sustainability positions it as a leader in engineering education for the challenges of the modern world.



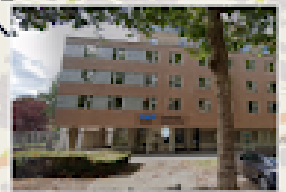
RESIDENCE MAP



Lavoisier



Condorcet



Descartes



IMT Nord Europe
Site de Douai : MDE
Rue du Kiosque & Quai du Maréchal Foch
59508 Douai

Entrée
Restaurant

The main residence is Lavoisier. Here are some pictures of Lavoisier residence.



THE BOURSEUL CAMPUS



Most of the Student Conference events will take place to the Bourseul Campus. It is made up of five buildings, all in close proximity to each other, as shown on the map.



Newton



DIRAC

Entrée



Laplace



Gay Lussac



Curie



IMT Nord Europe
École Mines-Télécom
IMT Université de Lille

IMT Nord Europe
Site de Douai : Bourseul
941 rue Charles Bourseul

IMT Nord Europe

BOURSEUL CAMPUS AND RESIDENCES

This map shows both the Bourseul campus and the residences. You can easily travel between them by bus, which are free of charge. All routes are detailed in the [eveole](#) application.



- BOURSEUL site → LAHURE site
- BOURSEUL site → residence and catering

FAST FOODS



Burger qui fume

varied, high-quality burgers,
halal meat.

Price: approx. 10 € per menu



Eat & Drink

Chick'n Beef

High-quality Indian cuisine:
butter chicken, naans, dahls...

Price: approx. 15-20 € per menu



Artino Grill

Grills, kebabs, gourmet
plates, halal meat. The
beef is excellent.

Price: approx. 10-15 € per
menu

Woody's Factory

The best of American food:
bowls, milkshakes, smash
burgers...

Price: approx. 10-15 € per menu



RESTAURANTS



La Quesadilla

delicious Mexican specialities:
burritos, quesadillas...
Vegetarian menu available.

Price: approx. 15-20 € per
menu



Namaste

High-quality Indian cuisine:
butter chicken, naans, dahls...

Price: approx. 15-20 € per menu



Fata Morgana Pizza

Traditional Italian pizza
cooked over a wood fire, using
local produce.

Price: approx. 15 € per menu



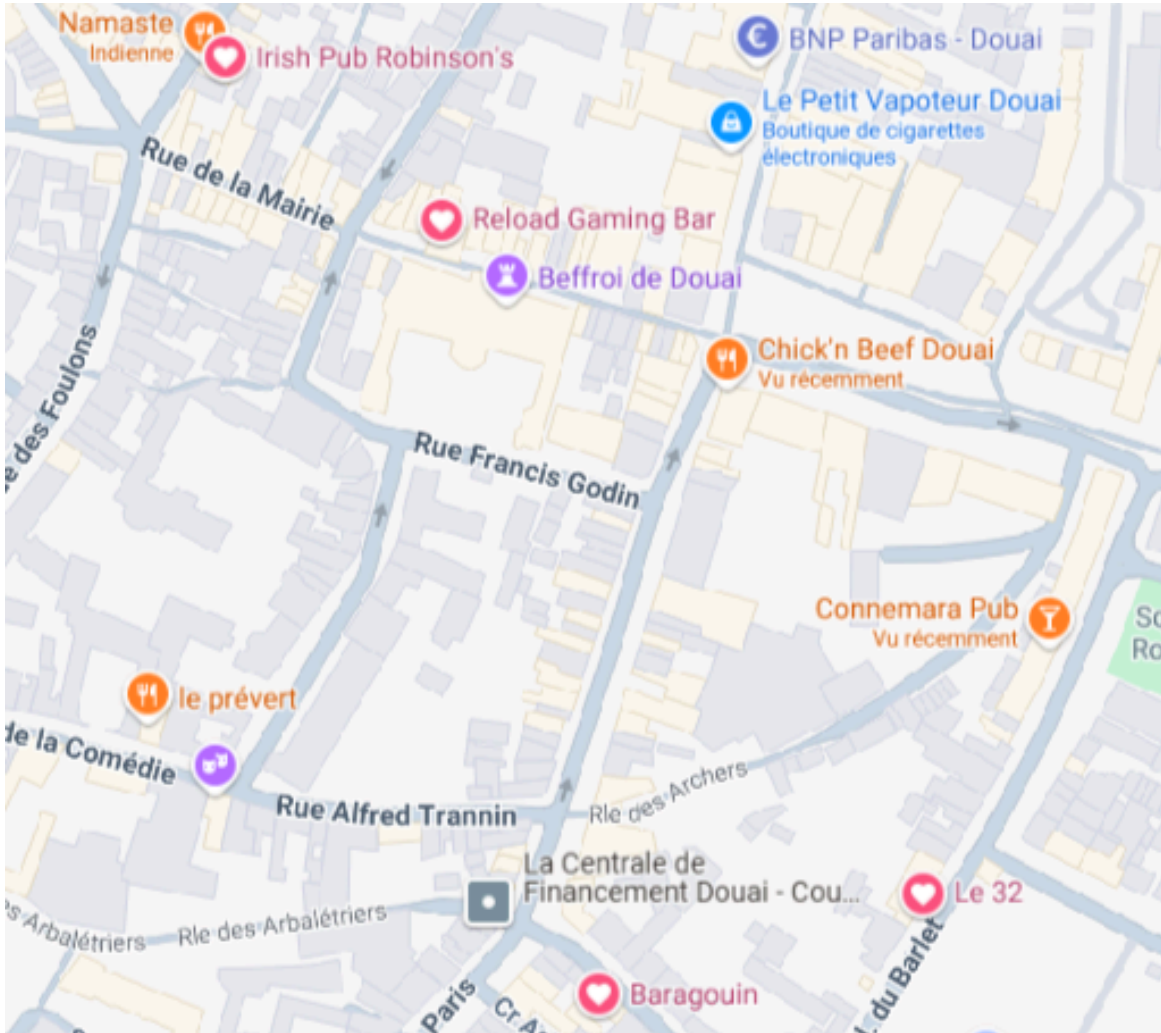
Au Gourmet d'Indochine

Tasty Indochinese cuisine,
Loc Lac beef is
recommended.

Price: approx. 15 € per
menu

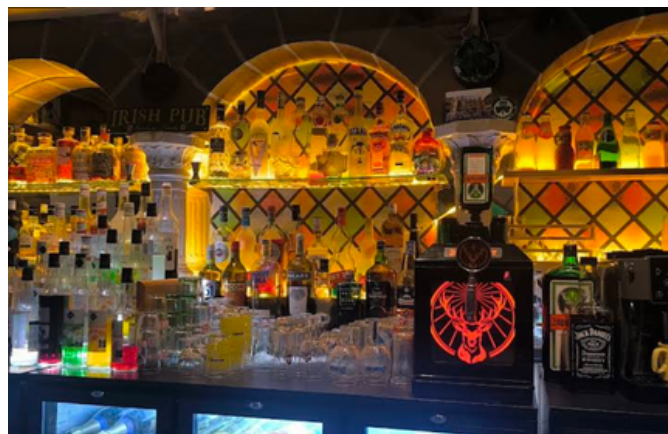


BARS & PUBS



Irish Pub Robinson's

If you like the atmosphere of a Saxon pub, this is the one for you. Billiards, table soccer and darts are available. Sports matches (rugby, football...) are also broadcast in the bar.



Le 32

If you're a cocktail-lover, keen to discover a wide selection of wines by the glass or bottle, champagnes, rums, whiskies or enjoy a gourmet charcuterie board to share, the 32 is for you. Reservations recommended.



Baragouin

At Le Baragouin, you can discover an authentic atmosphere and a wide selection of beers. Our waiters are on hand to offer advice and a warm, friendly atmosphere.



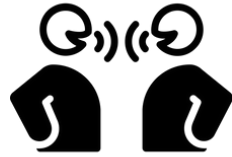
Reload Gaming Bar

The reload gaming bar is the place to be if you want to play video games, board games or karaoke, while enjoying a variety of drinks.



Practical Information

Language



Hello = Bonjour

Good Bye = Au revoir

Please = S'il vous plaît

Where are the toilets? = Où sont les toilettes?

I'm lost = Je suis perdu

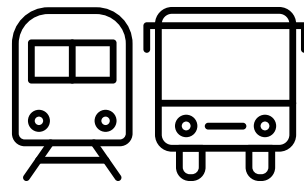
Health



Emergencies: 112

Medical doctor: visit
www.doctolib.fr

Transportation



Bus are free!

Use the eveole app for
itineraries